

WHY IT'S WIGGINS THE BEST YARD BULL

*Wiggins has been manufacturing
forklifts for over 60 years.
Engineered for the owner, designed
for the operator.*



WIGGINS



INNOVATIVE ENGINEERING AND TECHNOLOGY MEANS SAFETY

SAFETY IS A CRITICAL CHARACTERISTIC of any high capacity machine. Mishaps cost money, time, and, worst of all, can cause injury or even death. That's why Wiggins forklifts have standard safety features and options that save money. With the lowest counter-weight in the industry, rear visibility is dramatically improved, which increases customer and employee safety while protecting property from damage.

But we don't stop there. We use the latest cameras, sensors, and technology. Our Vision Plus™ safety system can differentiate people from objects and track them, warning the operator of possible safety hazards. The IQAN™ System with its adjustable monitor keeps the operator informed about engine performance and status. Ask about our optional certified Rollover Protection System, which complies with international safety standards.

Visibility, sensors, cameras, engineered monitoring systems, and overload warning systems help ensure that Wiggins Yard Bulls meets the highest possible safety standards.



OUR UNITS CAN LIFT MORE THAN ANY COMPETITOR WHEN COMPARED MODEL TO MODEL

HIGH CAPACITY WITH CONFIDENCE AND STRENGTH

LIFTING CAPACITY AND STABILITY are two of the most important characteristics of a yard truck. Wiggins specializes in high capacity forklifts, and our units can safely and reliably lift more than any competitor's lift when compared model to model. For example, to match the lift capacity of our Yard Bull 550 model at a 48" load center, you would have to buy a 600 or 620 model from one of our competitors. Our customers save money on maintenance and repairs by buying the right model for the right job. You don't need to overbuy with a Wiggins Yard Bull.

Our Yard Truck LoPRO has the lowest center of gravity and the heaviest counterweights in the industry, ensuring that you can lift the heaviest loads with confidence, typically lifting the full rated load to the top.

Wiggins Yard Bull means capacity, strength, safety, and durability.

TOP & COVER

With backup camera and proximity sensors, Wiggins helps reduce operating costs. On Cover: Jumbo Coil Ram for factory in Saudi Arabia

QUICK ACCESS PANELS

Save time and money with the Wiggins LoPRO Powered Tilt Cab and Quick Access Panels.





DUAL PURPOSE

Save money with Dual Purpose RoRo which is also a full-function Yard Bull.

SAVE MONEY AND TIME WITH EASY ACCESS AND QUICK SERVICE

WHEN IT COMES TO SERVICING a Wiggins Yard Bull, we beat the competition with easy access for maintenance, service, and troubleshooting. The innovative clamshell design of the operator console and engine compartment allows easy access—at eye level—to the entire power train for service when needed. Easy access means lowered maintenance costs and a quick return to moving cargo.

Our customers love the time- and money-savings that a Yard Bull brings to their operations.

BUILT FOR YOUR ENVIRONMENT & NEEDS

THE NEWEST DUAL PURPOSE Wiggins Yard Bull has an exceptionally low overall height, despite its maximum lift height and capacity. Designed for Roll-on Roll-off (RoRo), it can access the tightest cargo bays. Its Tier 4 Final Volvo engine means it meets the most stringent environmental standards.

**IN THE MOST
CRUCIAL AREAS
OF PERFORMANCE
AND SAFETY,
WE OVERBUILD.**



We design and manufacture each truck to meet the customer's unique environment and needs. Our goal is to make you better at what you do. This approach makes each Yard Bull particularly suited to the job it will perform, which means better performance and durability.

Wiggins builds machines to order, meaning you get what you need for your application, not some generalized lift that may or may not meet your needs.

WE ARE THE BEST AT CUSTOMIZATION

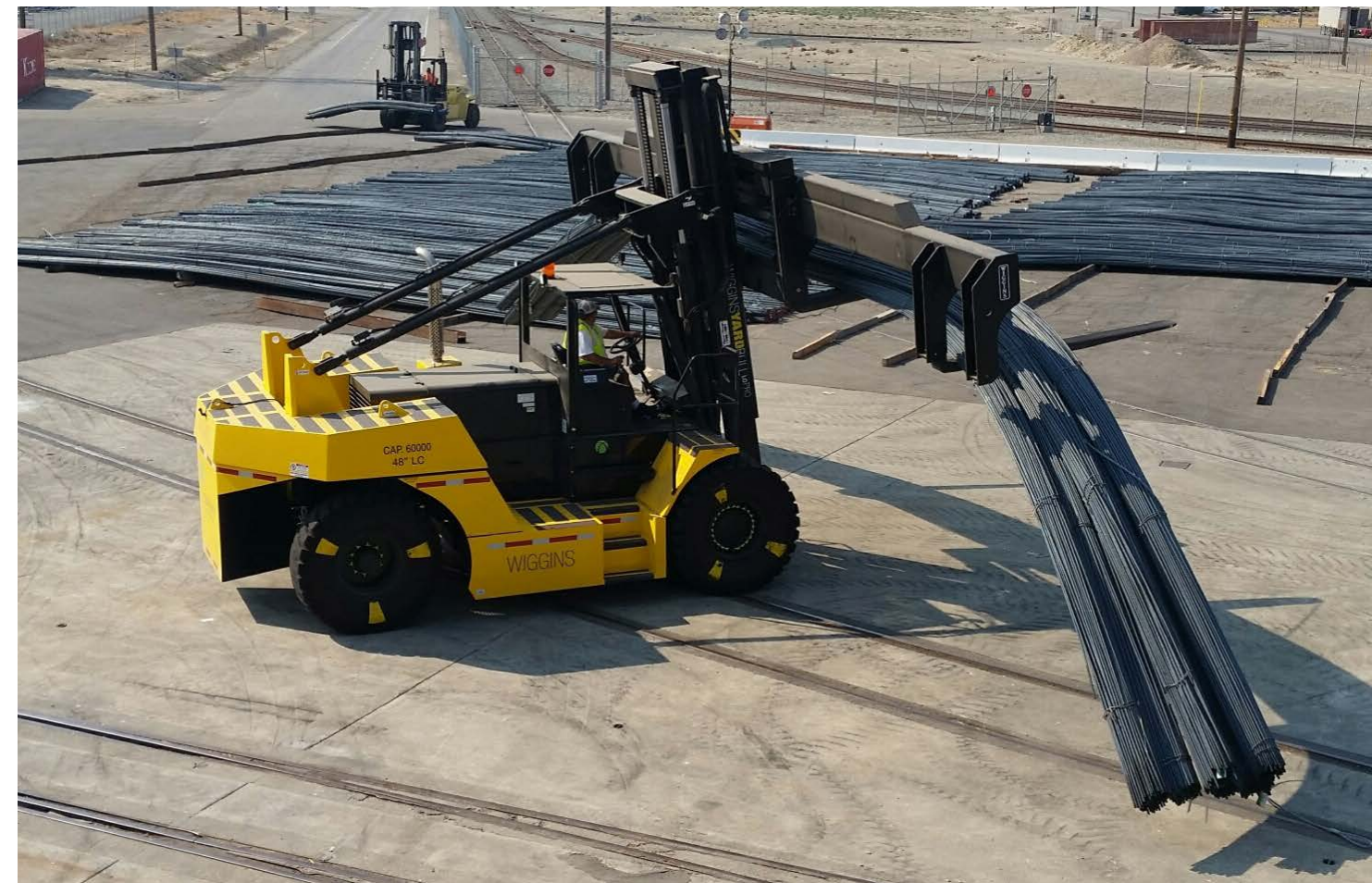
WIGGINS IS THE BEST AT CUSTOMIZATION. Do you have a particular need for your yard or construction site? A special attachment? For example, we have designed and manufactured Yard Bulls with custom 40- and 60-foot rebar attachments, custom coil ram attachments, attachments for heavy machinery tires, removable counterweight systems, and even nuclear waste handling attachments with automatic load leveling.

You name it; our engineers can design it, and we will manufacture it especially for you—usually with shorter delivery times than our competition.

**EASY ACCESS
MEANS LOWER
MAINTENANCE
COSTS AND A
QUICK RETURN TO
MOVING CARGO.**

CUSTOM ATTACHMENTS

Custom attachments increase your net income through versatile design.





WIGGINS YARD BULLS WORK HARDER AND LIVE LONGER

STRENGTH & DURABILITY

Wiggins Yard Bull pays for itself with the strength of our full penetration welds and solid design.



WIGGINS MACHINES ARE KNOWN for their longevity and durability. To us, “longevity” means fifteen or twenty years, not the four to eight of other manufacturers. There are Wiggins lifts still working in the field after 30 years!

We achieve this standard by starting with quality raw materials and the best components. In the most crucial areas of performance and safety we overbuild. Our carriages, forks, masts, and axles are the most rugged in the industry. The use of anti-corrosion materials adds to the durability. Our IQAN™ System hydraulic pressures test panel allows monitoring of truck performance and status, allowing the operators and mechanics to stay informed in real time.

We don't stop there. Our auto-lube system minimizes downtime by automatically lubricating key components—mast and carriage bearings, tilt cylinder, mast pins, and steer axles to ensure smooth operation and to save money. The optional oil purification system reduces costly and time-consuming oil changes. With proper maintenance, the Yard Bull LoPRO with optional Super Filtration can operate as long as one year without having to change the lubricating oils. This feature alone has proven to extend component life by thousands of hours.

An investment in a Wiggins Yard Bull is an investment for the long haul.

WIGGINS LIFT COMPANY

www.wigginslift.com
info@wigginslift.com

2571 Cortez Street
Oxnard, CA 93036

